

TEAC

SERVICE MANUAL

MODEL

DV-3100VK

CAUTION : Before servicing this chassis, read the "PRODUCT SAFETY SERVICE FOR VIDEO PRODUCTS" section on page 2 of this manual.

DVD and CD PLAYER



SPECIFICATIONS

DVD VIDEO PLAYER

Signal system	PAL/AUTO/NTSC
Laser	Wavelength 650nm
Frequency response	20Hz to 20kHz
Signal/Noise ratio	≥85dB
Audio distortion+noise	≤-80dB(1kHz)
Channel separation	≥85dB(1kHz)
Dynamic range	≥85dB(1kHz)

OUTPUTS

Video outputs	1.0V(p-p), 75ohm, negative sync.
S-video outputs	(Y)1.0V(p-p), (C)0.286V(p-p) 75ohm, negative sync.
Audio outputs (digital audio)	0.5V(p-p), 75ohm
Audio outputs (analog audio)	2.0Vrms(1KHz,0.8dB), 10Kohm
Component video out	Y:700mv ;CB:535.5mv ;CR:535,5mv

GENERAL

Power supply	AC220V, 50Hz
Power consumption	<20W
Dimensions	435 x 95 x 280 (mm)
Weight	Around 4kgs

CONTENTS

SERVICE PRECAUTIONS	1
LOCATION OF CONTROLS	2-4
BLOCK DIAGRAMS	5
ELECTRICAL TROUBLE SHOOTING GUIDE	6-16
PRINTED CIRCUIT	17-22
EXPLODED VIEW/PARTS LIST(CABINET)	23
REPLACEMENT PARTS LIST	24-25

PRODUCT SAFETY SERVICING GUIDELINES FOR VIDEO PRODUCTS

CAUTION: DO NOT ATTEMPT TO MODIFY THIS PRODUCT IN ANY WAY AND NEVER PERFORM CUSTOMIZED INSTALLATIONS WITHOUT MANUFACTURER'S APPROVAL. UNAUTHORIZED MODIFICATIONS WILL NOT ONLY VOID THE WARRANTY, BUT MAY LEAD TO YOUR BEING LIABLE FOR ANY RESULTING PROPERTY DAMAGE OR USER INJURY.

SERVICE WORK SHOULD BE PERFORMED ONLY AFTER YOU ARE THOROUGHLY FAMILIAR WITH ALL OF THE FOLLOWING SAFETY CHECKS AND SERVICING GUIDELINES. TO DO OTHERWISE, INCREASES THE RISK OF POTENTIAL HAZARDS AND INJURY TO THE USER.

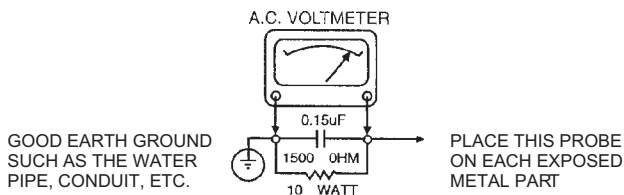
WHILE SERVICING, USE AN ISOLATION TRANSFORMER FOR PROTECTION FROM A.C. LINE SHOCK.

SAFETY CHECKS

AFTER THE ORIGINAL SERVICE PROBLEM HAS BEEN CORRECTED, A CHECK SHOULD BE MADE OF THE FOLLOWING.

SUBJECT: FIRE & SHOCK HAZARD

1. BE SURE THAT ALL COMPONENTS ARE POSITIONED IN SUCH A WAY AS TO AVOID POSSIBILITY OF ADJACENT COMPONENT SHORTS. THIS IS ESPECIALLY IMPORTANT ON THOSE MODULES WHICH ARE TRANSPORTED TO AND FROM THE REPAIR SHOP.
2. NEVER RELEASE A REPAIR UNLESS ALL PROTECTIVE DEVICES SUCH AS INSULATORS, BARRIERS, COVERS, SHIELDS, STRAIN RELIEFS, POWER SUPPLY CORDS, AND OTHER HARDWARE HAVE BEEN REINSTALLED PER ORIGINAL DESIGN. BE SURE THAT THE SAFETY PURPOSE OF THE POLARIZED LINE PLUG HAS NOT BEEN DEFEATED.
3. SOLDERING MUST BE INSPECTED TO DISCOVER POSSIBLE COLD SOLDER JOINTS, SOLDER SPLASHES OR SHARP SOLDER POINTS. BE CERTAIN TO REMOVE ALL LOOSE FOREIGN PARTICLES.
4. CHECK FOR PHYSICAL EVIDENCE OF DAMAGE OR DETERIORATION TO PARTS AND COMPONENTS, FOR FRAYED LEADS AND DAMAGED INSULATION (INCLUDING A.C. CORD), AND REPLACE IF NECESSARY FOLLOW ORIGINAL LAYOUT, LEAD LENGTH AND DRESS.
5. NO LEAD OR COMPONENT SHOULD TOUCH A RECEIVING TUBE OR A RESISTOR RATED AT 1 WATT OR MORE. LEAD TENSION AROUND PROTRUDING METAL SURFACES MUST BE AVOIDED.
6. ALL CRITICAL COMPONENTS SUCH AS FUSES, FLAMEPROOF RESISTORS, CAPACITORS, ETC. MUST BE REPLACED WITH EXACT FACTORY TYPES, DO NOT USE REPLACEMENT COMPONENTS OTHER THAN THOSE SPECIFIED OR MAKE UNRECOMMENDED CIRCUIT MODIFICATIONS.
7. AFTER RE-ASSEMBLY OF THE SET, ALWAYS PERFORM AN A.C. LEAKAGE TEST ON ALL EXPOSED METALLIC PARTS OF THE CABINET, (THE CHANNEL SELECTOR KNOB, ANTENNA TERMINALS, HANDLE AND SCREWS) TO BE SURE THE SET IS SAFE TO OPERATE WITHOUT DANGER OF ELECTRICAL SHOCK. DO NOT USE A LINE ISOLATION TRANSFORMER DURING THIS TEST, MAKE SURE TO USE AN A.C. VOLTMETER, HAVING 5000 OHMS PER VOLT OR MORE SENSITIVITY, IN THE FOLLOWING MANNER; CONNECT A 1500 OHMS 10 WATT RESISTOR, PARALLELED BY A .15 MFD. 150V A.C. TYPE CAPACITOR BETWEEN A KNOWN GOOD EARTH GROUND (WATER PIPE, CONDUIT, ETC.) AND THE EXPOSED METALLIC PARTS, ONE AT A TIME. MEASURE THE A.C. VOLTAGE ACROSS THE COMBINATION OF 1500 OHM RESISTOR AND .15 MFD CAPACITOR. REVERSE THE A.C. PLUG AND REPEAT A.C. ANY VOLTAGE MEASUREMENTS FOR EACH EXPOSED METALLIC PART. VOLTAGE MEASURED MUST NOT EXCEED 75 VOLTS R.M.S. THIS CORRESPONDS TO 0.5 MILLIAMPS A.C. ANY VALUE EXCEEDING THIS LIMIT CONSTITUTES A POTENTIAL SHOCK HAZARD AND MUST BE CORRECTED IMMEDIATELY.



SUBJECT GRAPHIC SYMBOLS



THE LIGHTNING FLASH WITH APROWHEAD SYMBOL, WITHIN AN EQUILATERAL TRIANGLE, IS INTENDED TO ALERT THE SERVICE PERSONNEL TO THE PRESENCE OF UNINSULATED "DANGEROUS VOLTAGE" THAT MAY BE OF SUFFICIENT MAGNITUDE TO CONSTITUTE A RISK OF ELECTRIC SHOCK.



THE EXCLAMATION POINT WITHIN AN EQUILATERAL TRIANGLE IS INTENDED TO ALERT THE SERVICE PERSONNEL TO THE PRESENCE OF IMPORTANT SAFETY INFORMATION IN SERVICE LITERATURE.

SUBJECT: X-RADIATION

1. BE SURE PROCEDURES AND INSTRUCTIONS TO ALL SERVICE PERSONNEL COVER THE SUBJECT OF X-RADIATION. THE ONLY POTENTIAL SOURCE OF X-RAYS IN CURRENT T.V. RECEIVERS IS THE PICTURE TUBE. HOWEVER, THIS TUBE DOES NOT EMIT X-RAYS WHEN THE HIGH VOLTAGE IS AT THE FACTORY SPECIFIED LEVEL. THE PROPER VALUE IS GIVEN IN THE APPLICABLE SCHEMATIC. OPERATION AT HIGHER VOLTAGES MAY CAUSE A FAILURE OF THE PICTURE TUBE OR HIGH VOLTAGE SUPPLY AND, UNDER CERTAIN CIRCUMSTANCES, MAY PRODUCE RADIATION IN EXCESS OF DESIRABLE LEVELS.
2. ONLY FACTORY SPECIFIED C.R.T ANODE CONNECTORS MUST BE USED. DEGAUSSING SHIELDS ALSO SERVE AS AN X-RAY SHIELD IN COLOR SETS, ALWAYS RE-INSTALL THEM.
3. IT IS ESSENTIAL THAT SERVICE PERSONNEL HAVE AVAILABLE AN ACCURATE AND RELIABLE HIGH VOLTAGE METER. THE CALIBRATION OF THE METER SHOULD BE CHECKED PERIODICALLY AGAINST A REFERENCE STANDARD, SUCH AS THE ONE AVAILABLE AT YOUR DISTRIBUTOR.
4. WHEN THE HIGH VOLTAGE CIRCUITRY IS OPERATING PROPERLY, THERE IS NO POSSIBILITY OF AN X-RADIATION PROBLEM. EVERY TIME A COLOR CHASSIS IS SERVICED, THE BRIGHTNESS SHOULD BE RUN UP AND DOWN WHILE MONITORING THE HIGH VOLTAGE WITH A METER TO BE CERTAIN THAT THE HIGH VOLTAGE DOES NOT EXCEED THE SPECIFIED VALUE AND THAT IT IS REGULATING CORRECTLY. WE SUGGEST THAT YOU AND YOUR SERVICE ORGANIZATION REVIEW TEST PROCEDURES SO THAT VOLTAGE REGULATION IS ALWAYS CHECKED AS A STANDARD SERVICING PROCEDURE AND THAT THE HIGH VOLTAGE READING BE RECORDED ON EACH CUSTOMER'S INVOICE.
5. WHEN TROUBLESHOOTING AND MAKING TEST MEASUREMENTS IN A PRODUCT WITH A PROBLEM OF EXCESSIVE HIGH VOLTAGE AVOID BEING UNNECESSARILY CLOSE TO THE PICTURE TUBE AND THE HIGH VOLTAGE SUPPLY DO NOT OPERATE THE PRODUCT LONGER THAN IT IS NECESSARY TO LOCATE THE CAUSE OF EXCESSIVE VOLTAGE.
6. REFER TO HV. B+ AND SHUTDOWN ADJUSTMENT PROCEDURES DESCRIBED IN THE APPROPRIATE SCHEMATIC AND DIAGRAMS (WHERE USED).

SUBJECT: IMPLOSION

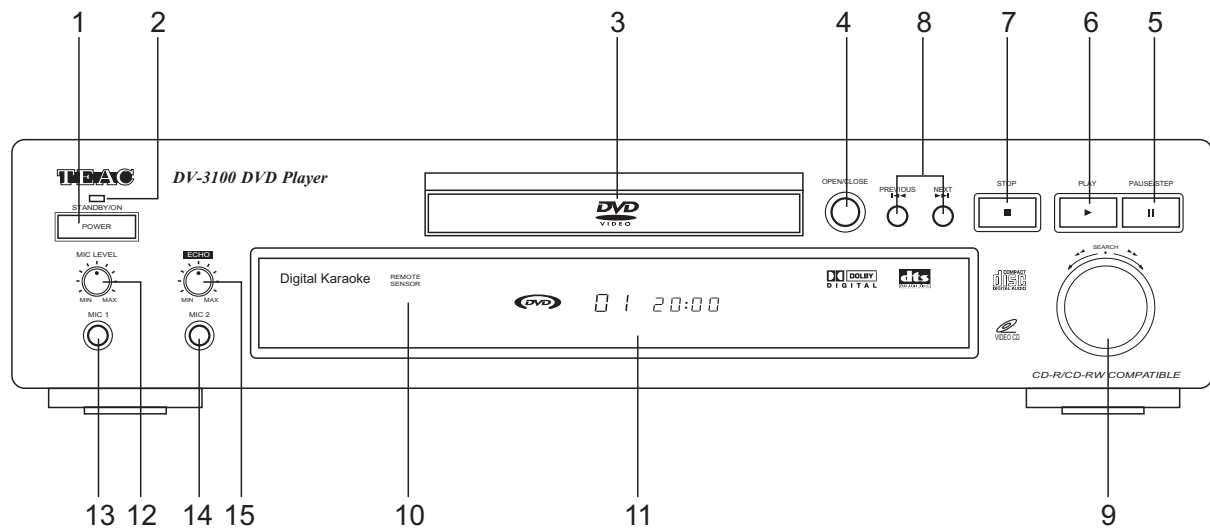
1. ALL DIRECT VIEWED PICTURE TUBES ARE EQUIPPED WITH AN INTEGRAL IMPLOSION PROTECTION SYSTEM, BUT CARE SHOULD BE TAKEN TO AVOID DAMAGE DURING INSTALLATION, AVOID SCRATCHING THE TUBE. IF SCRATCHED REPLACE IT.
2. USE ONLY RECOMMENDED FACTORY REPLACEMENT TUBES.

SUBJECT: TIPS ON PROPER INSTALLATION

1. NEVER INSTALL ANY PRODUCT IN A CLOSED-IN RECESS, CUBBYHOLE OR CLOSELY FITTING SHELF SPACE, OVER OR CLOSE TO HEAT DUCT, OR IN THE PATH OF HEATED AIR FLOW.
2. AVOID CONDITIONS OF HIGH HUMIDITY SUCH AS: OUTDOOR PATIO INSTALLATIONS WHERE DEW IS A FACTOR, NEAR STEAM RADIATORS WHERE STEAM LEAKAGE IS A FACTOR, ETC.
3. AVOID PLACEMENT WHERE DRAPERIES MAY OBSTRUCT REAR VENTING. THE CUSTOMER SHOULD ALSO AVOID THE USE OF DECORATIVE SCARVES OR OTHER COVERINGS WHICH MIGHT OBSTRUCT VENTILATION.
4. WALL AND SHELF MOUNTED INSTALLATIONS USING A COMMERCIAL MOUNTING KIT, MUST FOLLOW THE FACTORY APPROVED MOUNTING INSTRUCTIONS. A PRODUCT MOUNTED TO A SHELF OR PLATFORM MUST RETAIN ITS ORIGINAL FEET (OR THE EQUIVALENT THICKNESS IN SPACERS) TO PROVIDE ADEQUATE AIR FLOW ACROSS THE BOTTOM. BOLTS OR SCREWS USED FOR FASTENERS MUST NOT TOUCH ANY PARTS OR WIRING. PERFORM LEAKAGE TEST ON CUSTOMIZED INSTALLATIONS.
5. CAUTION CUSTOMERS AGAINST THE MOUNTING OF A PRODUCT ON SLOPING SHELF OR A TILTED POSITION, UNLESS THE PRODUCT IS PROPERLY SECURED.
6. A PRODUCT ON A ROLL-ABOUT CART SHOULD BE STABLE ON ITS MOUNTING TO THE CART CAUTION THE CUSTOMER ON THE HAZARDS OF TRYING TO ROLL A CART WITH SMALL CASTERS ACROSS THRESHOLDS OR DEEP PILE CARPETS.
7. CAUTION CUSTOMERS AGAINST THE USE OF A CART OR STAND WHICH HAS NOT BEEN LISTED BY UNDERWRITERS LABORATORIES, INC. FOR USE WITH THEIR SPECIFIC MODEL OF TELEVISION RECEIVER OR GENERICALLY APPROVED FOR USE WITH TV'S OF THE SAME OR LARGER SCREEN SIZE.
8. CAUTION CUSTOMERS AGAINST THE USE OF EXTENSION CORDS. EXPLAIN THAT A FOREST OF EXTENSIONS SPROUTING FROM A SINGLE OUTLET CAN LEAD TO DISASTROUS CONSEQUENCES TO HOME AND FAMILY.

PREPARATIONS BEFORE OPERATION(Con't)

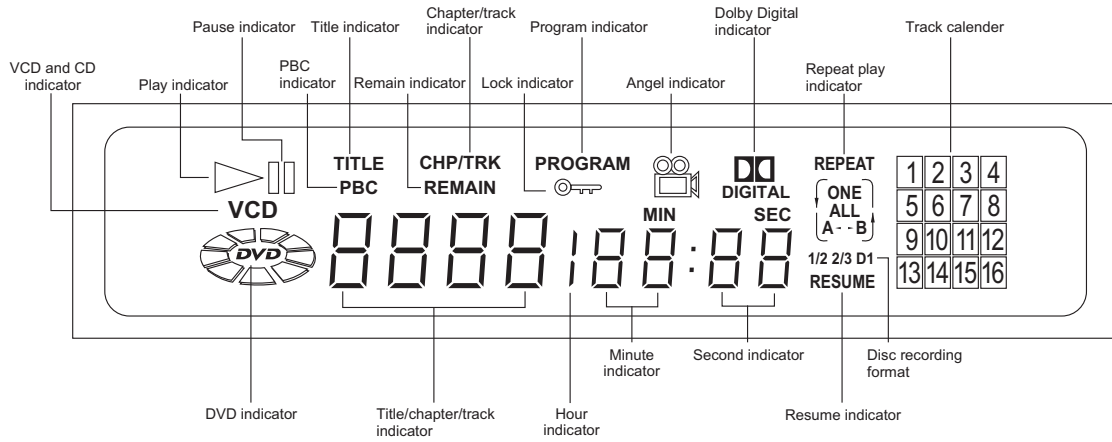
FRONT PANEL



- | | |
|----------------------|-------------------|
| 1. POWER | 8. PREVIOUS/NEXT |
| 2. STANDBY INDICATOR | 9. SEARCH |
| 3. DISC TRAY | 10. REMOTE SENSOR |
| 4. OPEN/CLOSE | 11. DISPLAY |
| 5. PAUSE/STEP | 12. MIC LEVEL |
| 6. PLAY | 13. MIC 1 |
| 7. STOP | 14. MIC 2 |
| | 15. ECHO |

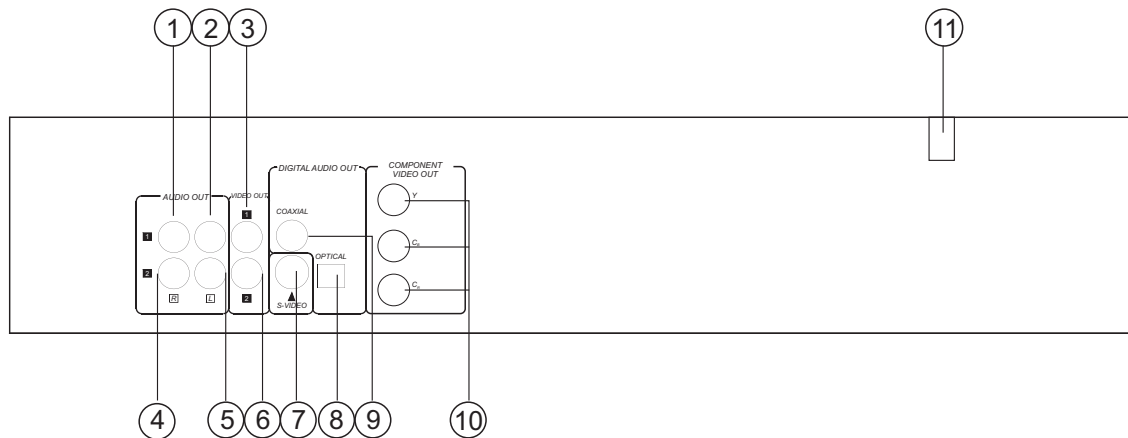
PREPARATIONS BEFORE OPERATION(Con't)

DISPLAY



Push **DIMMER**, the brightness of the display is reduced by half, push it once more, the display becomes dark. Push the button again, the display resumes brightness.

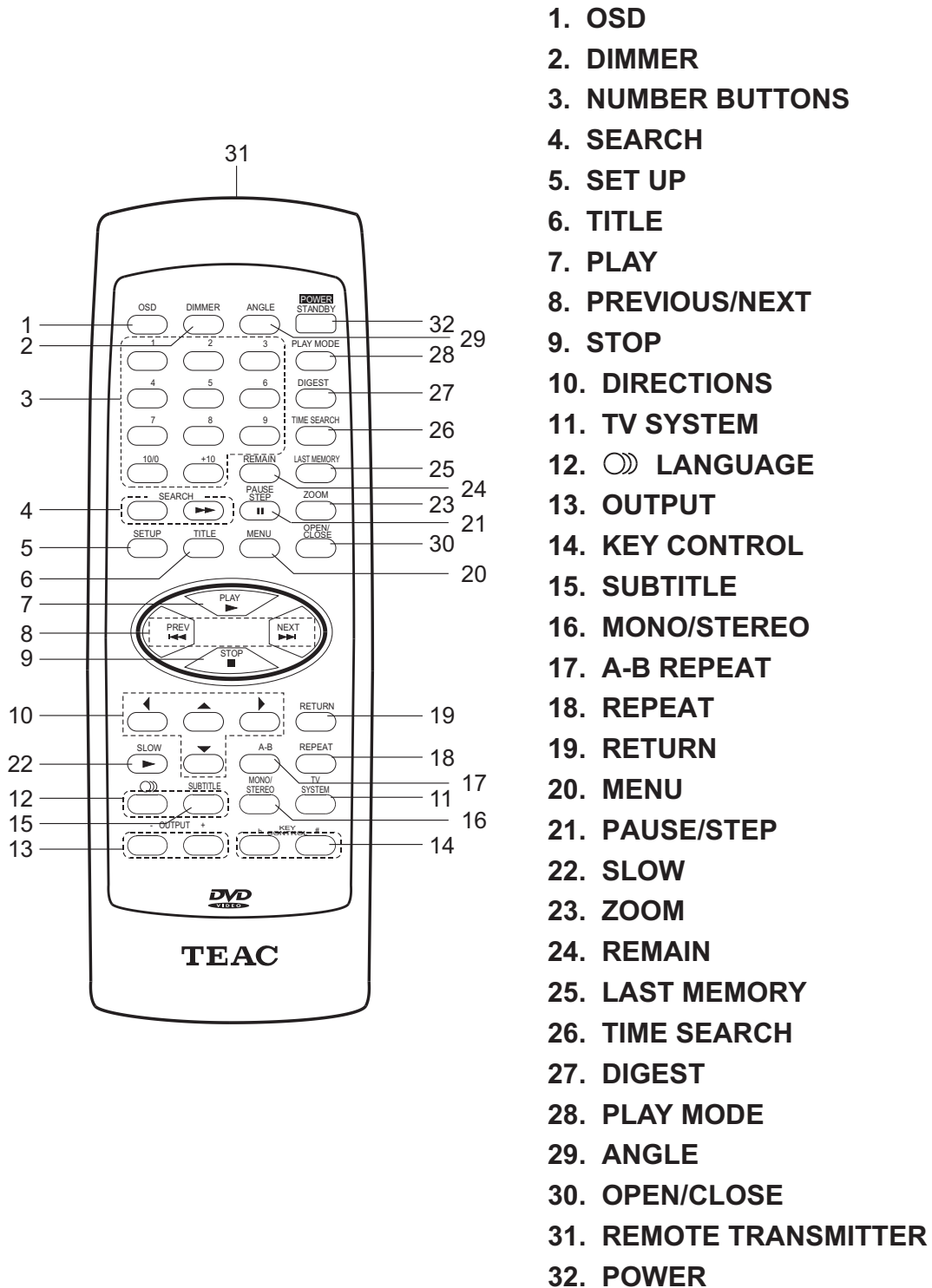
REAR PANEL



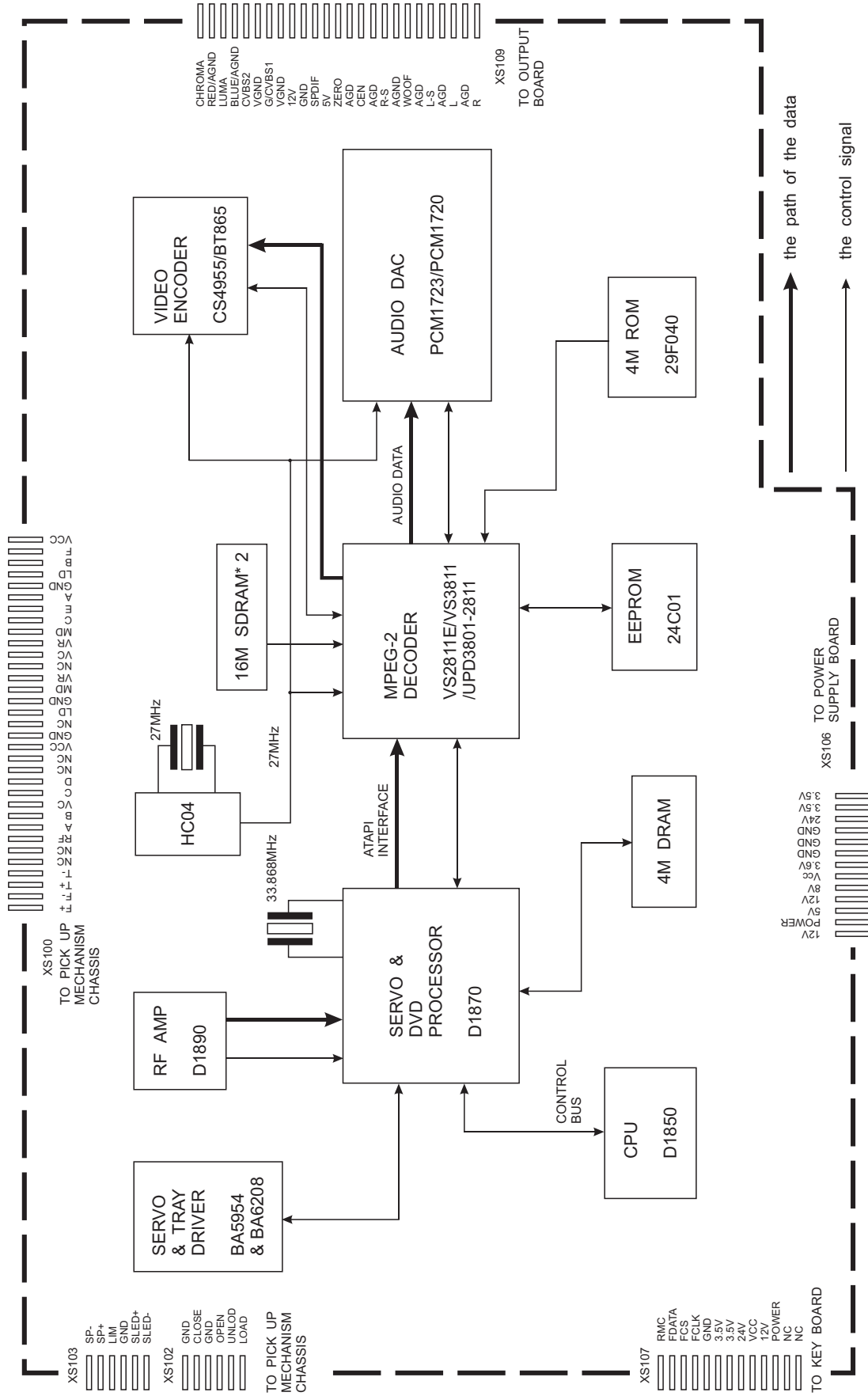
1. AUDIO OUT 1 R
2. AUDIO OUT 1 L
3. VIDEO OUT 1
4. AUDIO OUT 2 R
5. AUDIO OUT 2 L
6. VIDEO OUT 2
7. S-VIDEO OUT
8. DIGITAL OUT (OPTICAL)
9. DIGITAL OUT (COAXIAL)
10. COMPONENT
(Color Difference Output)
11. POWER SUPPLY CORD

PREPARATIONS BEFORE OPERATION(Con't)

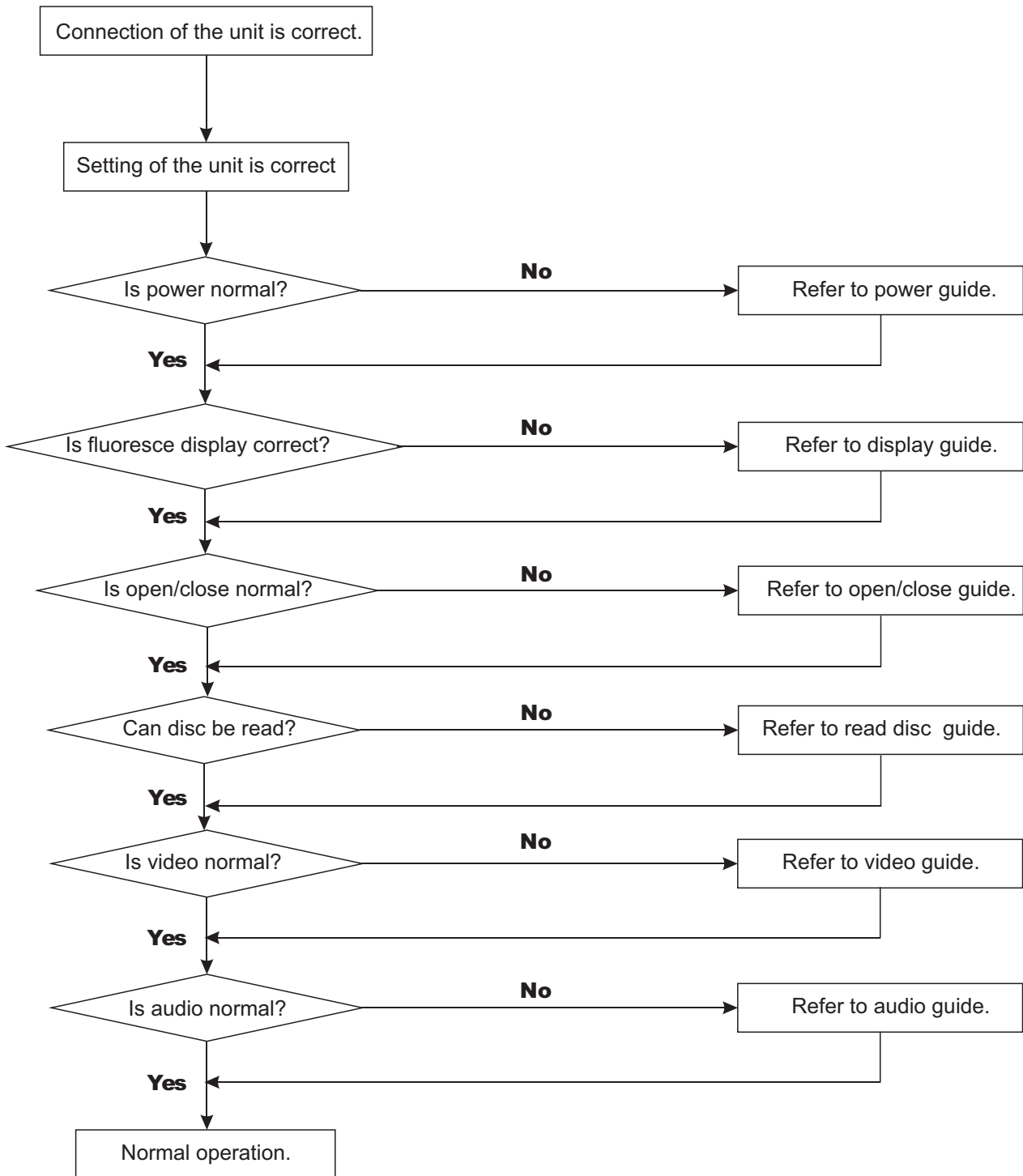
NAMES AND LAYOUT OF REMOTE CONTROLS



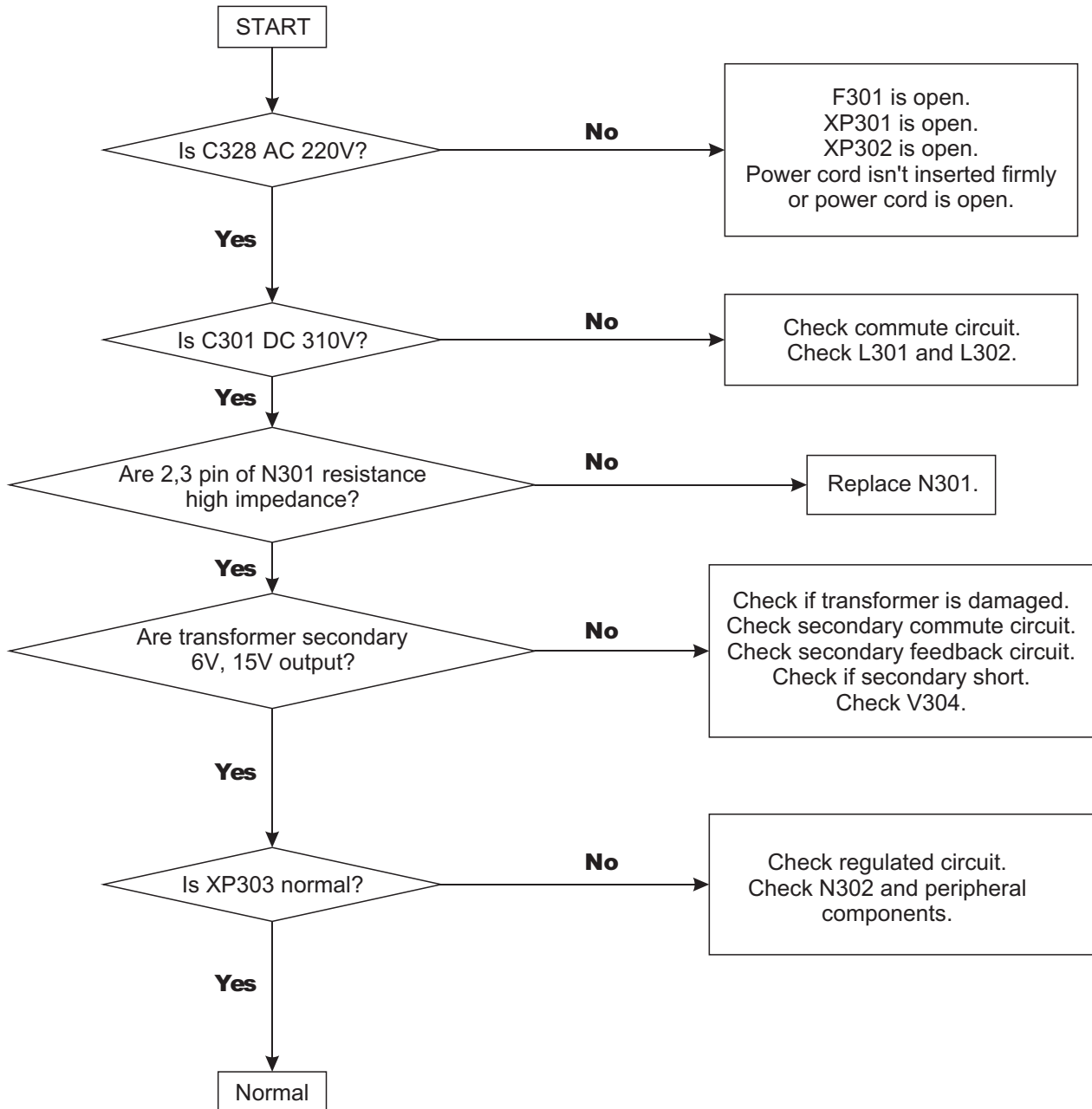
OVERALL BLOCK DIAGRAM



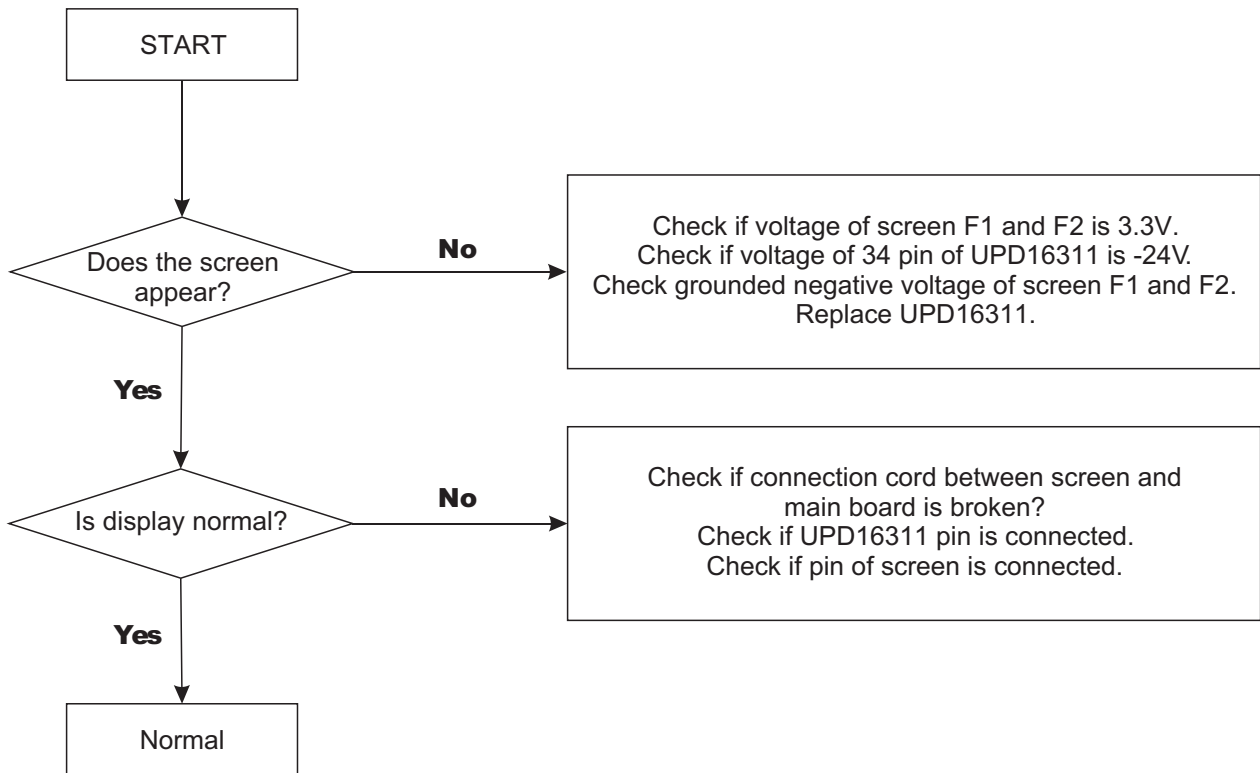
Electrical Trouble Shooting Guide



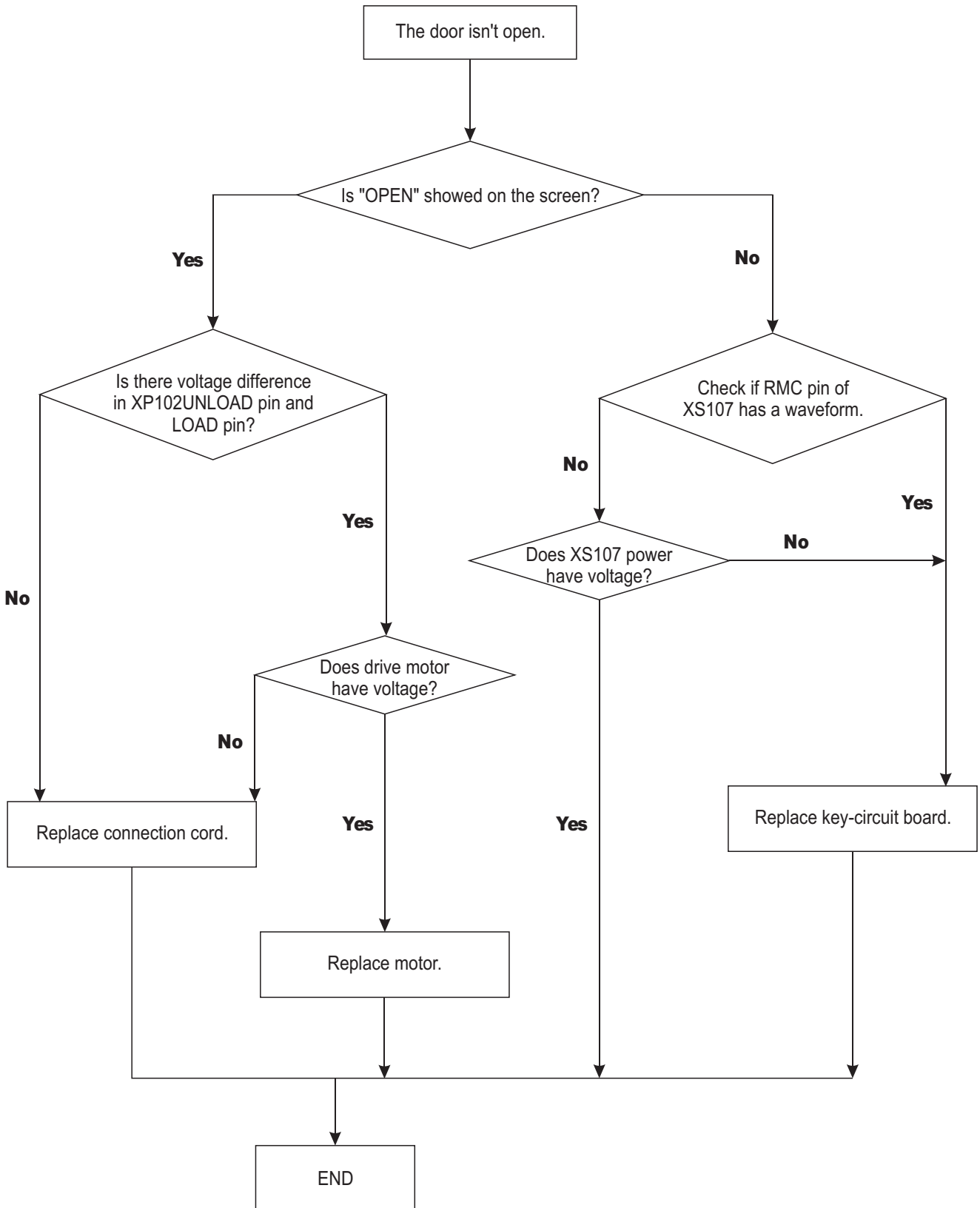
A Power Circuit abnormal



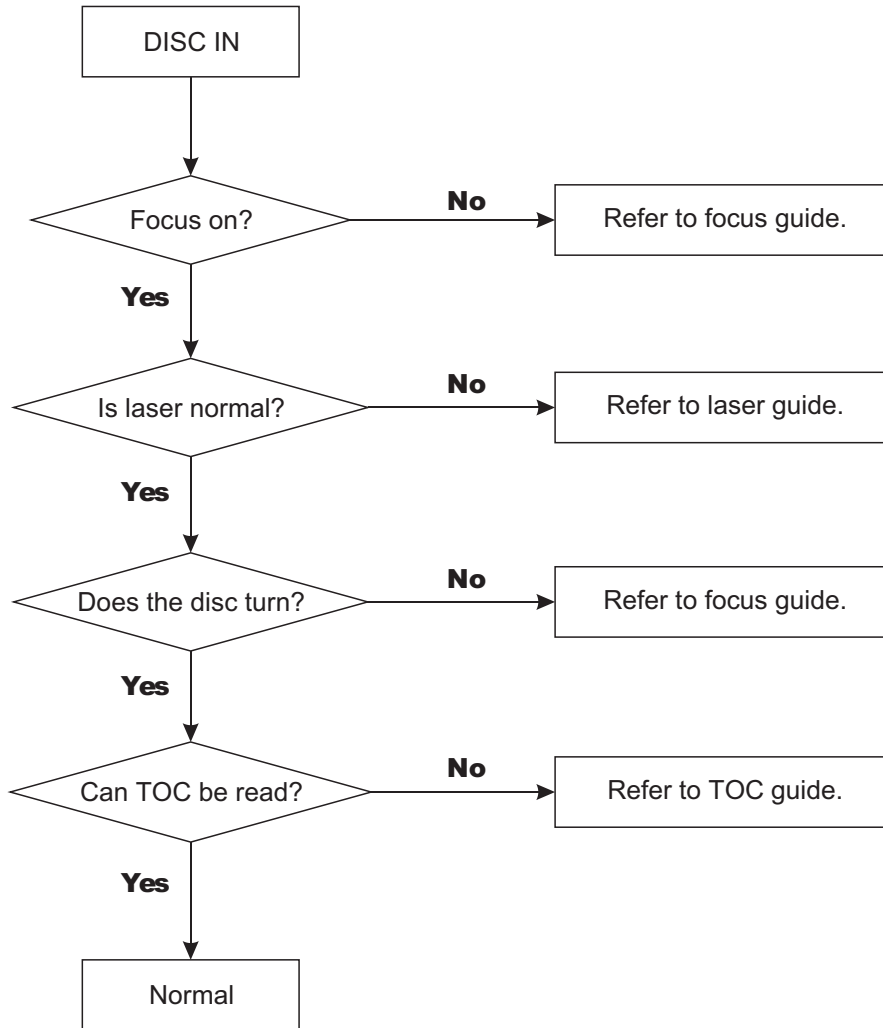
B Display abnormal



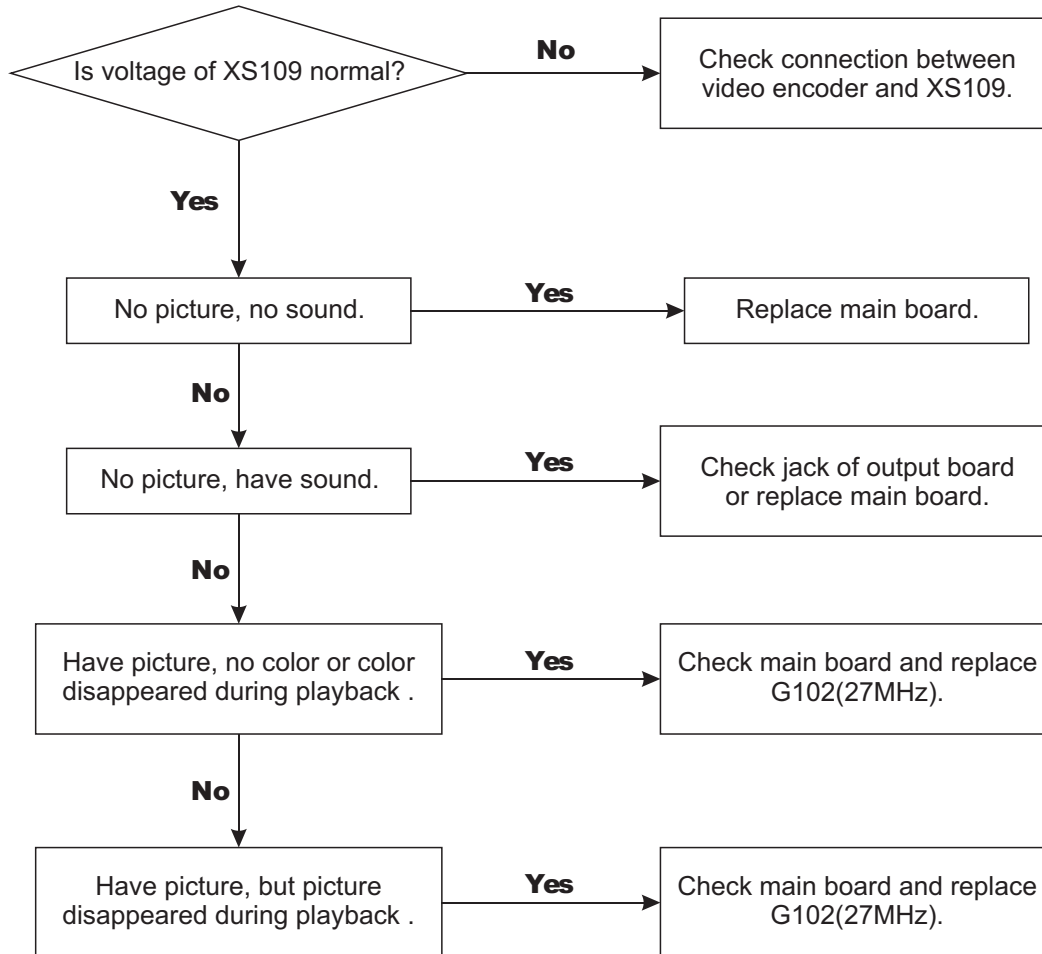
C Open/close abnormal



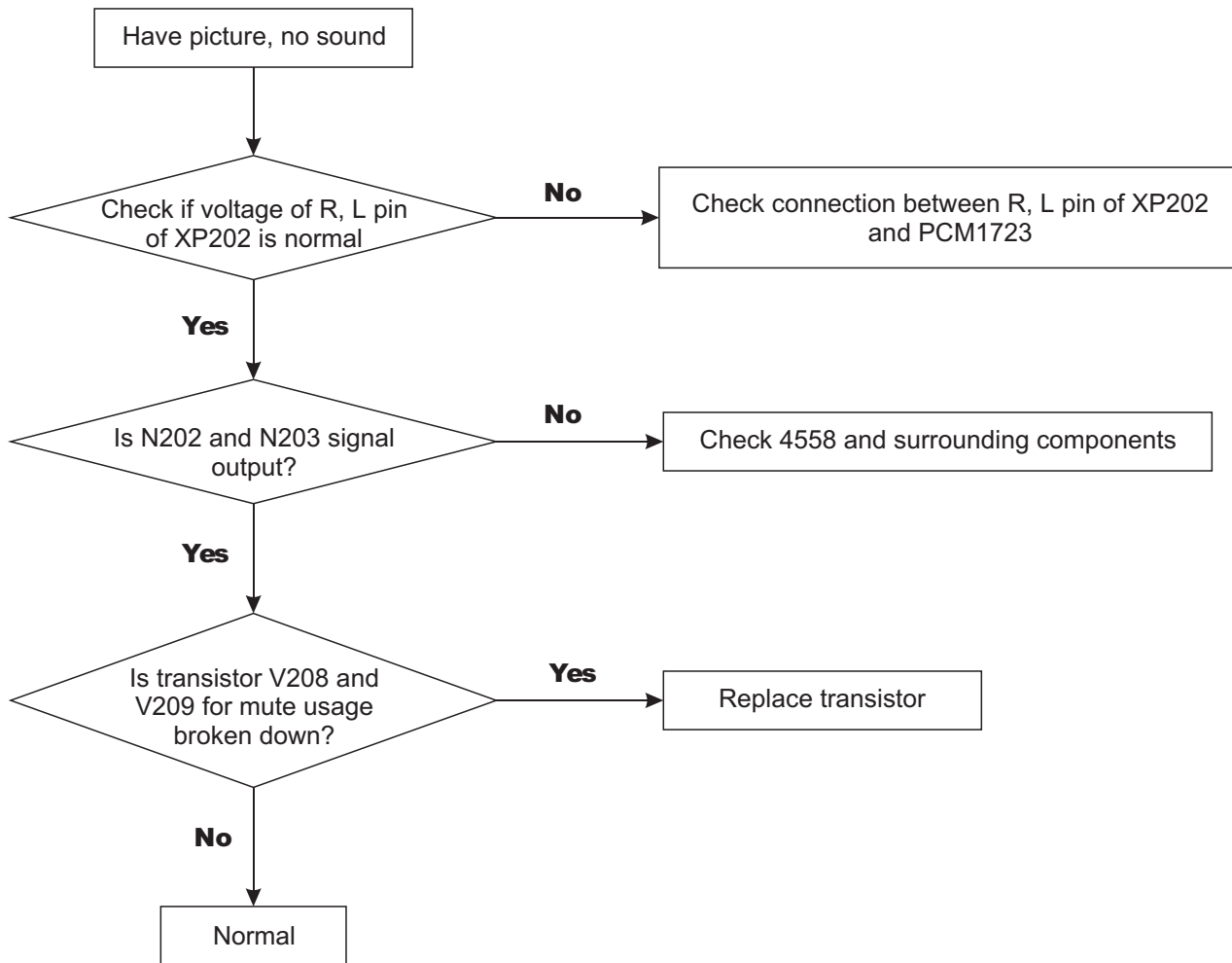
D Read disc abnormal



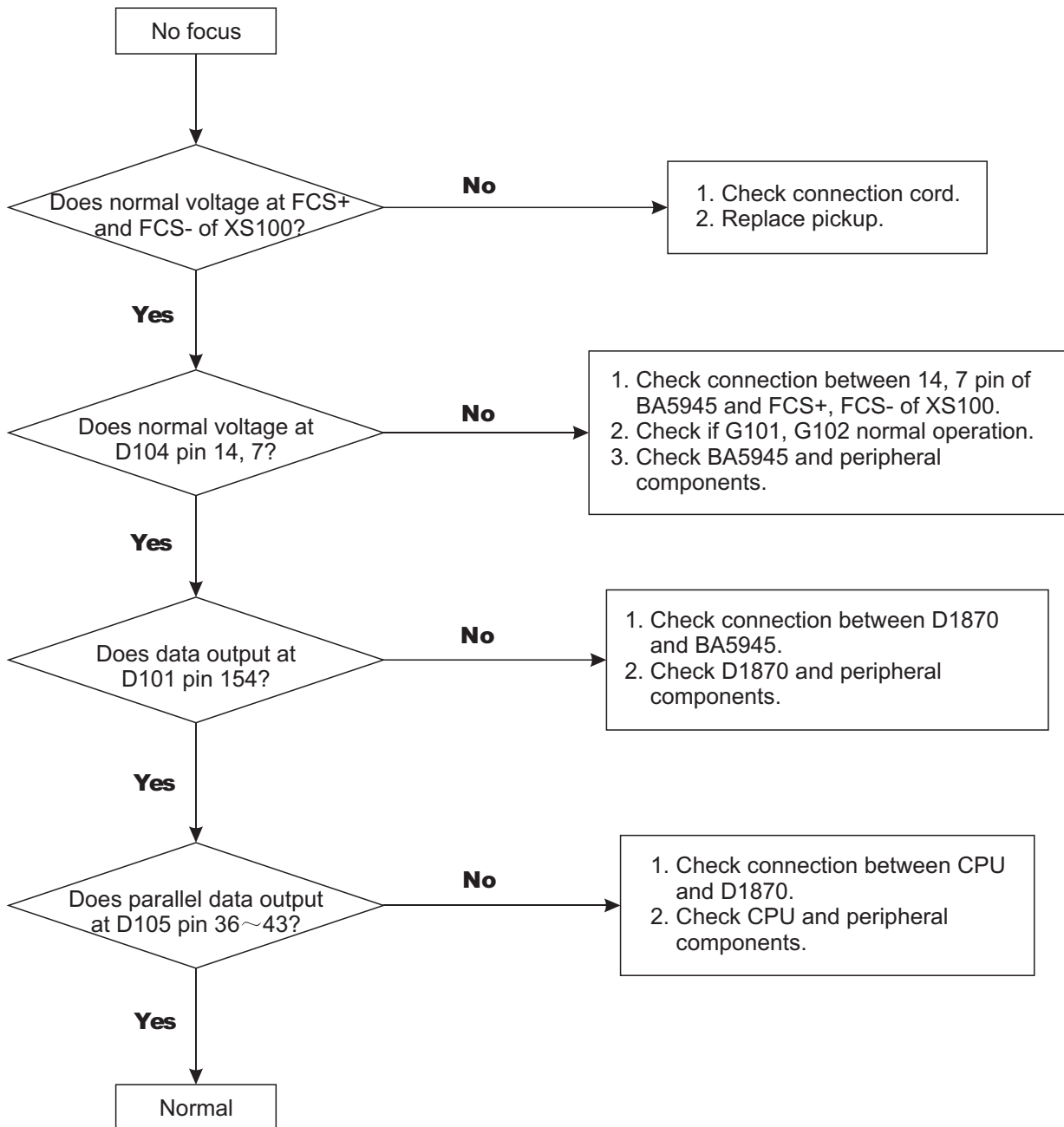
E Video abnormal



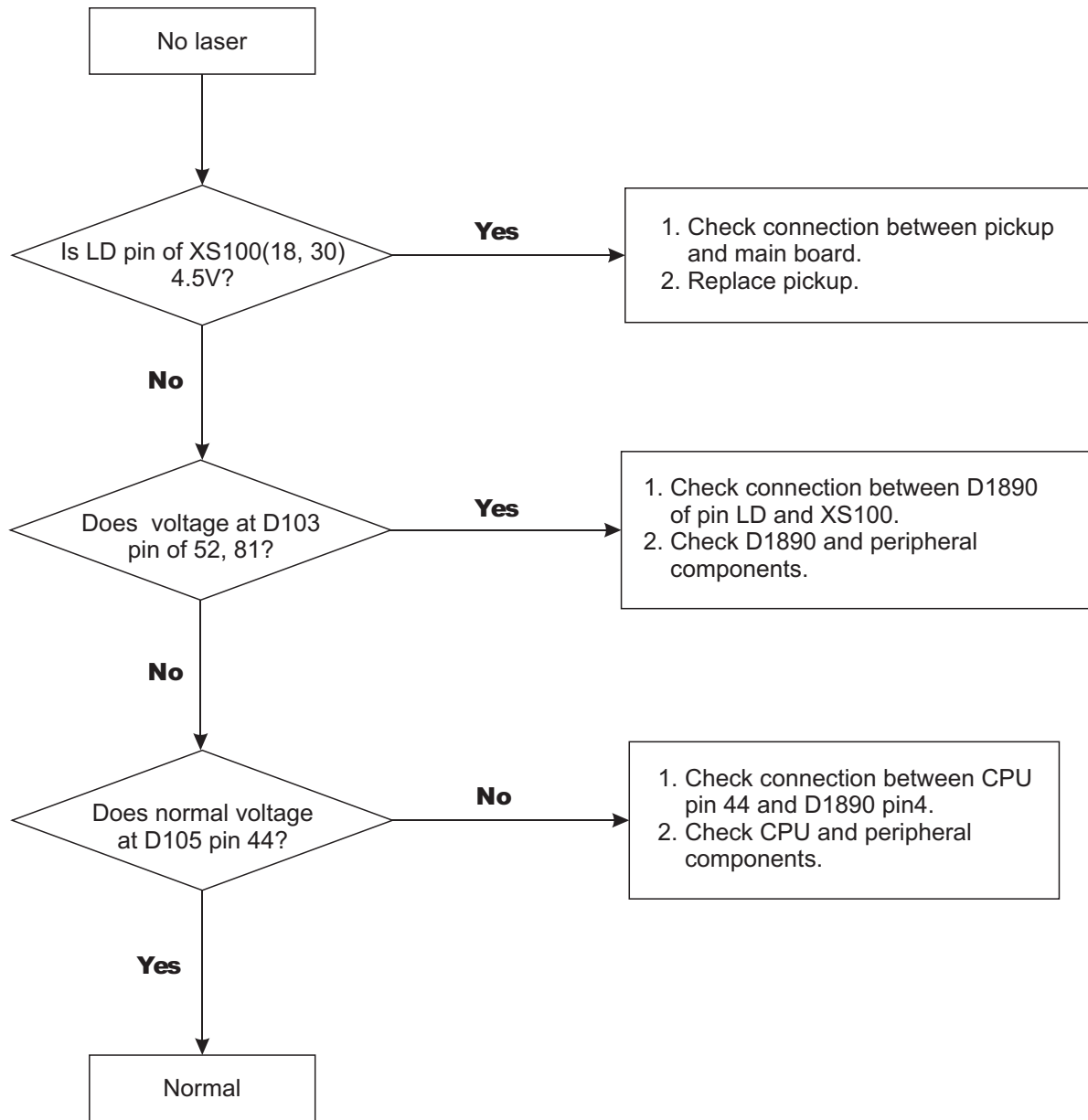
F Audio abnormal



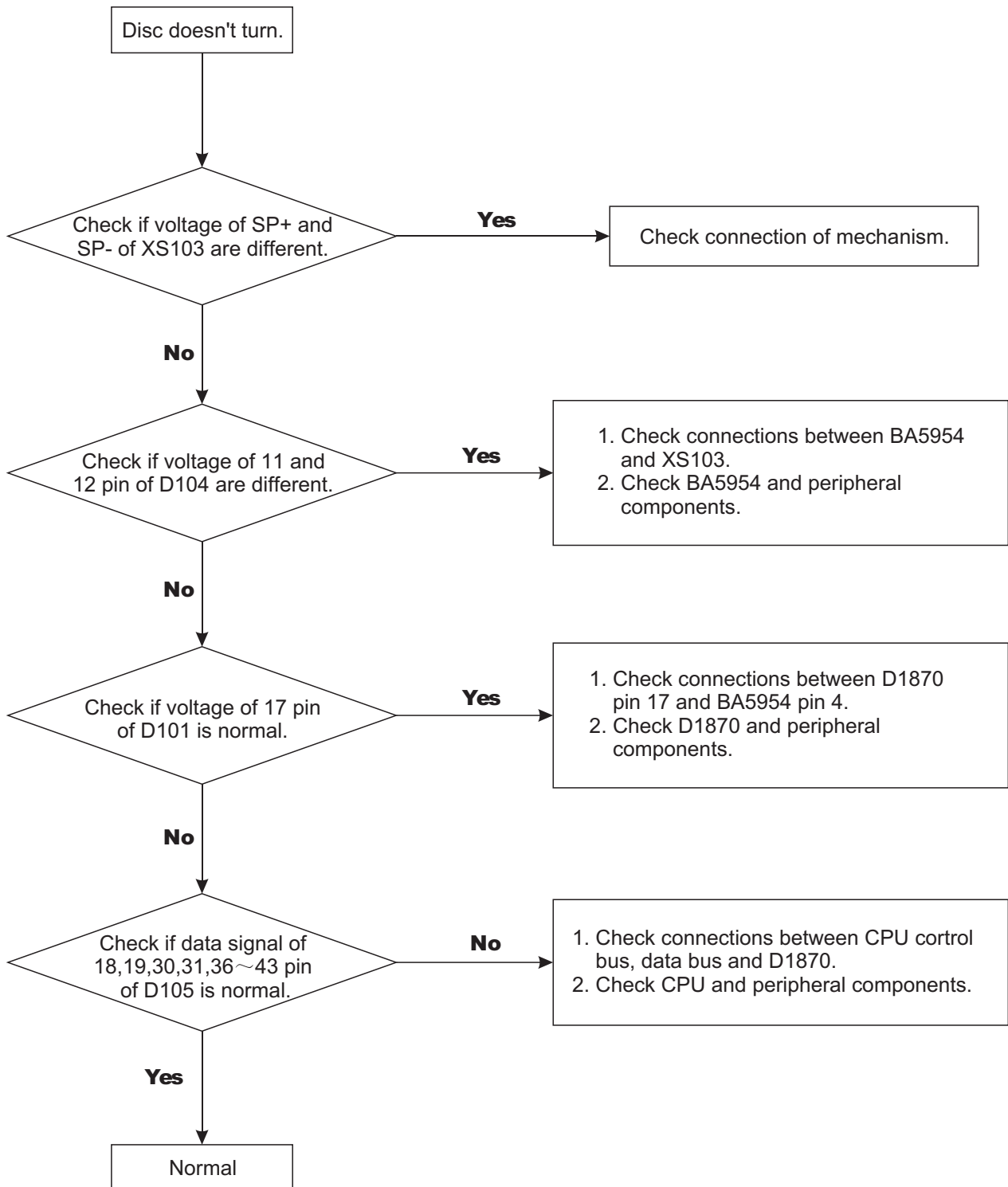
G Focus abnormal



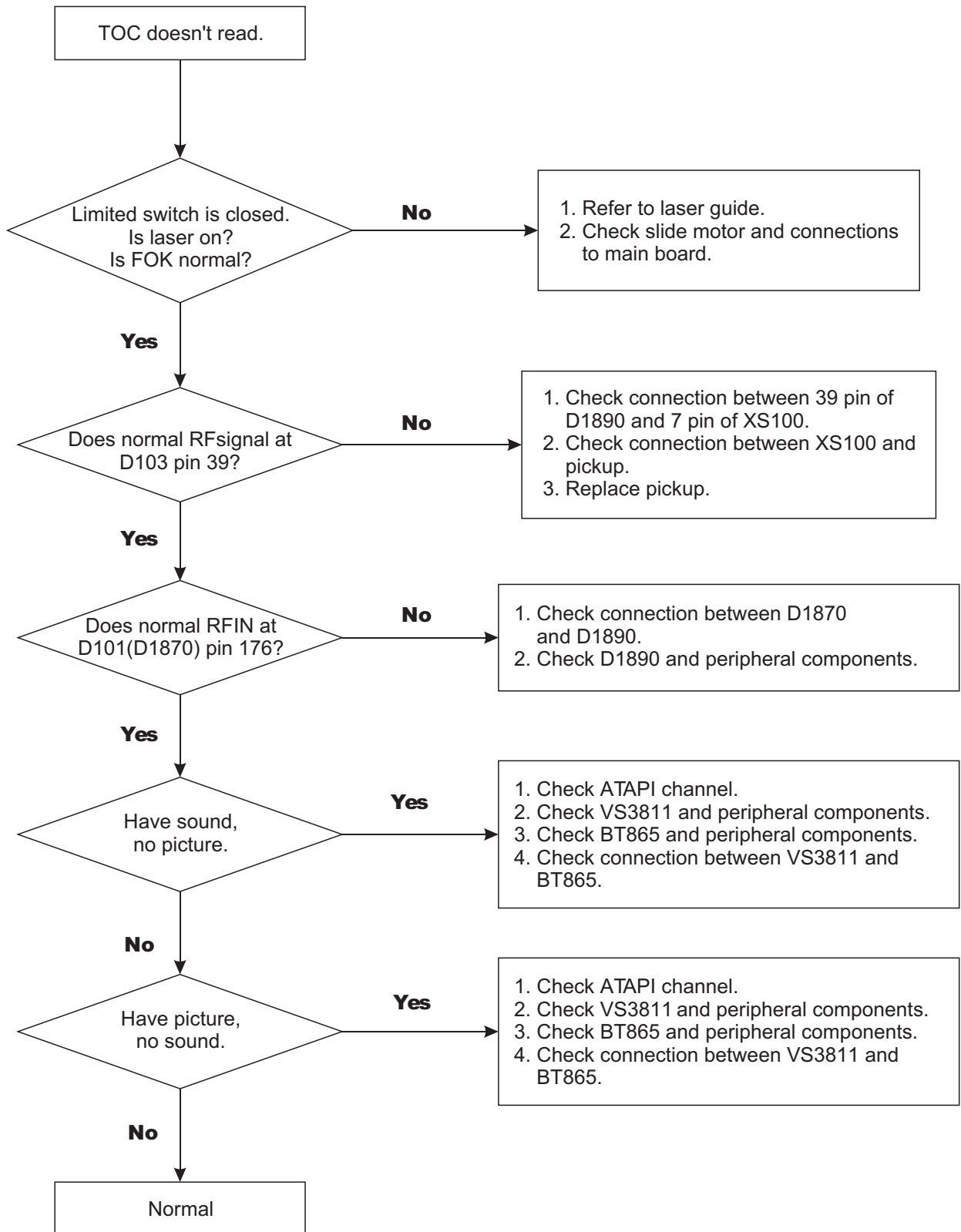
H Laser abnormal

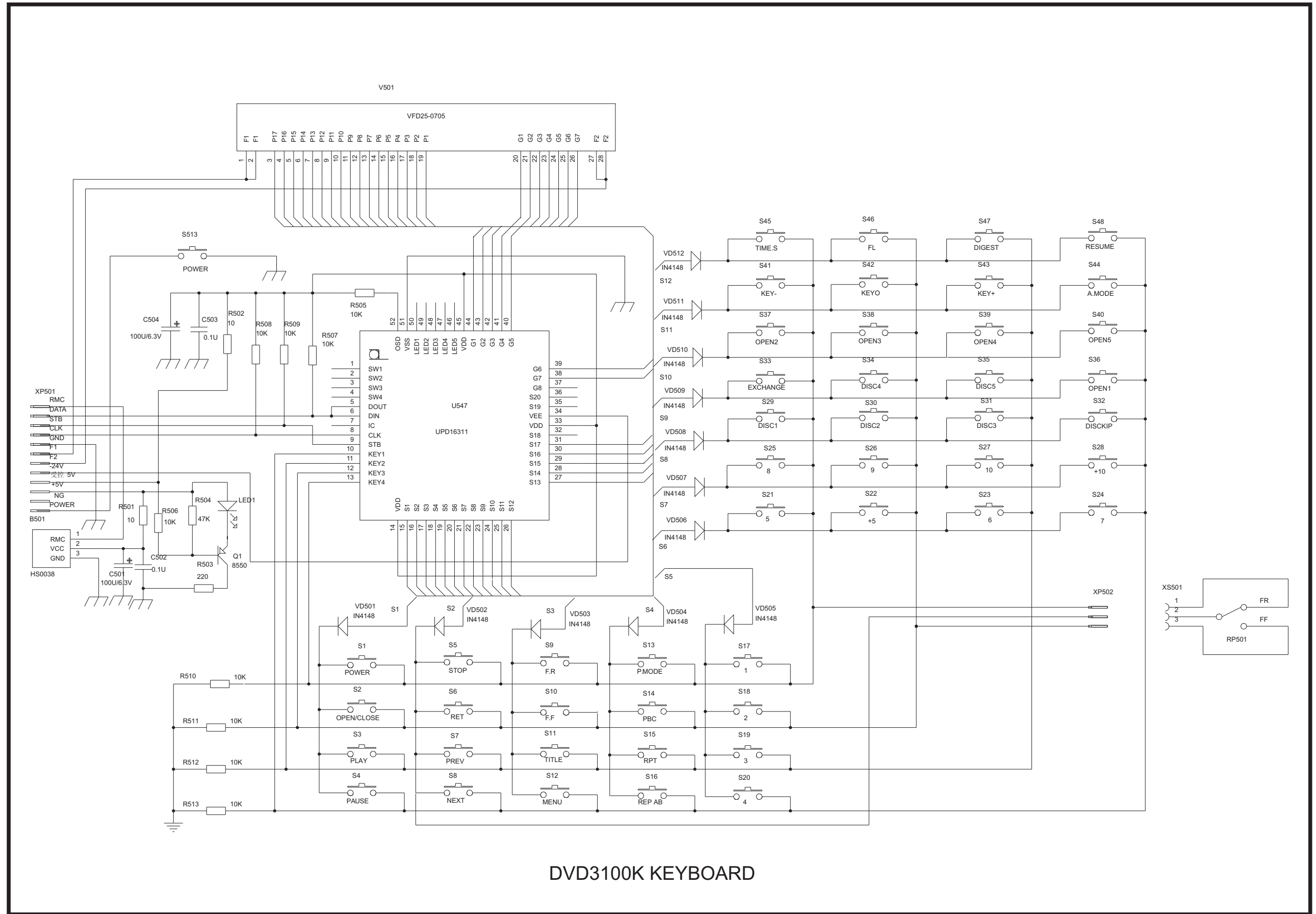


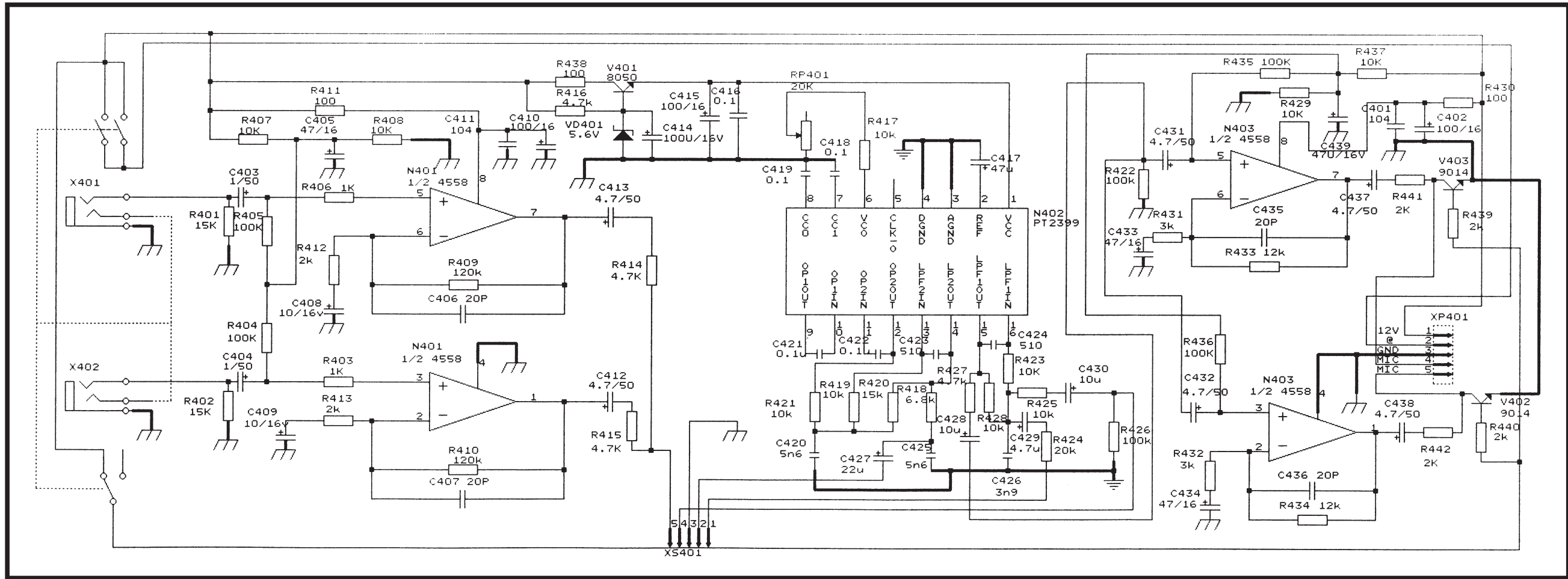
I Turn abnormal



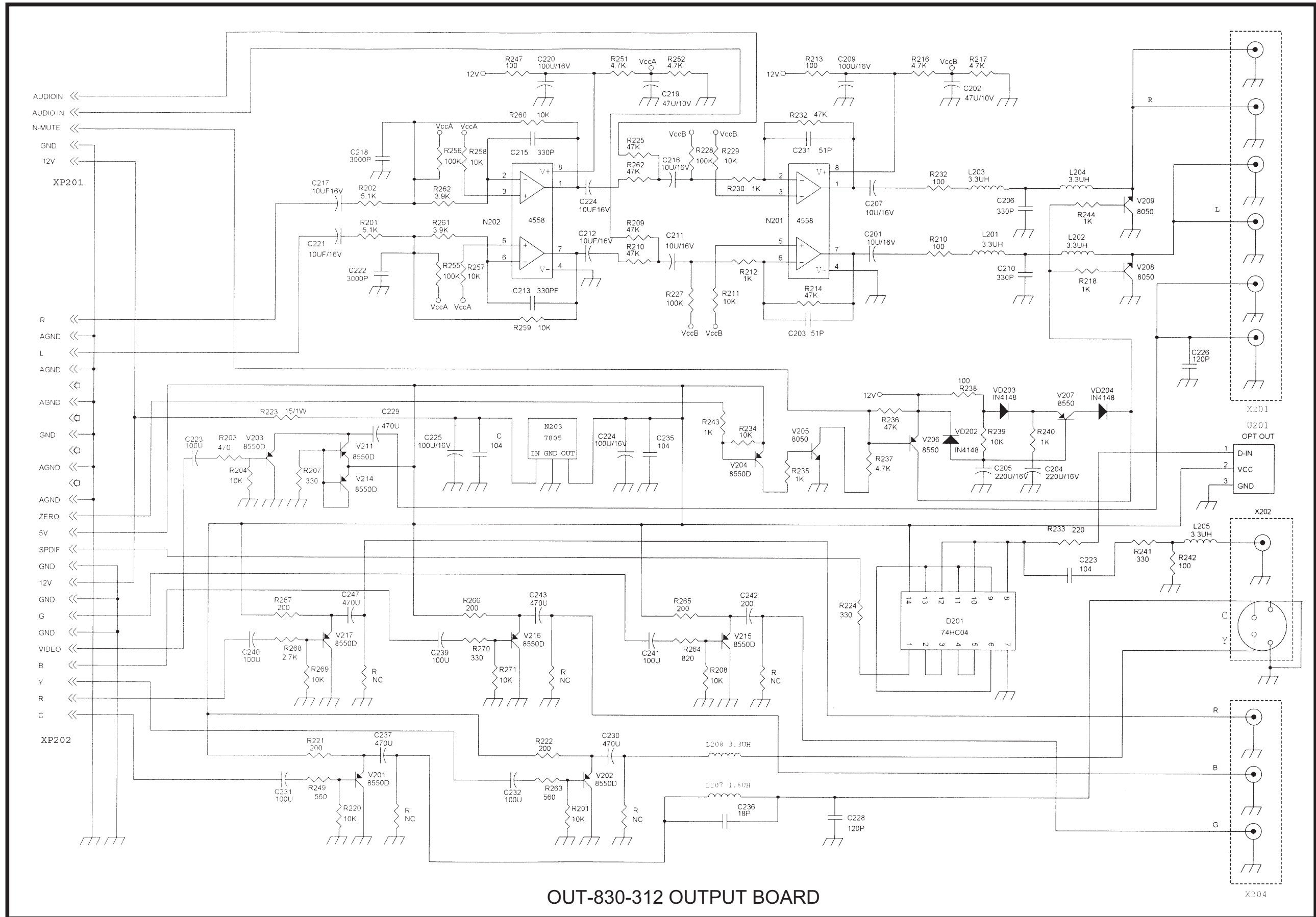
J TOC abnormal

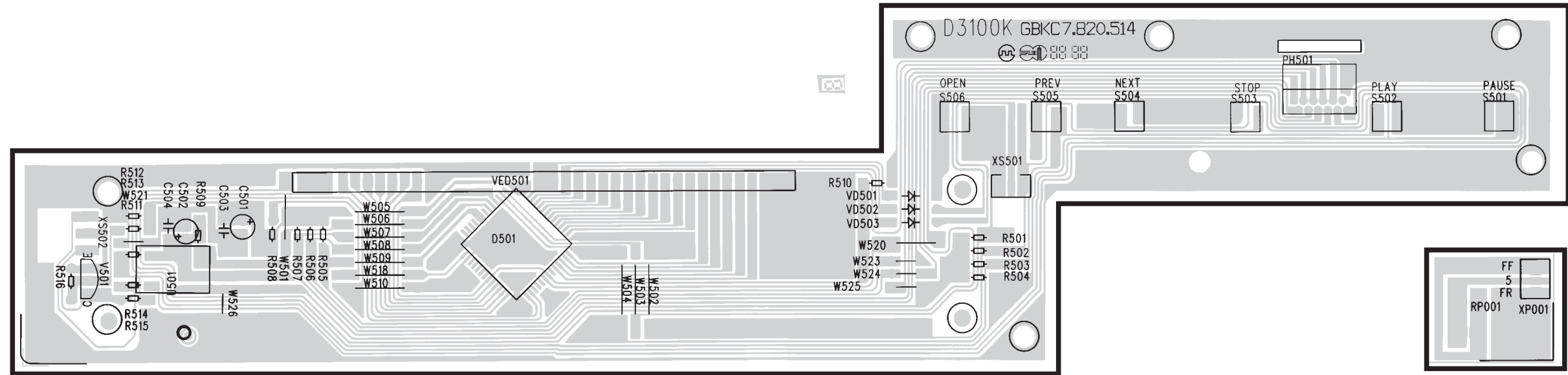




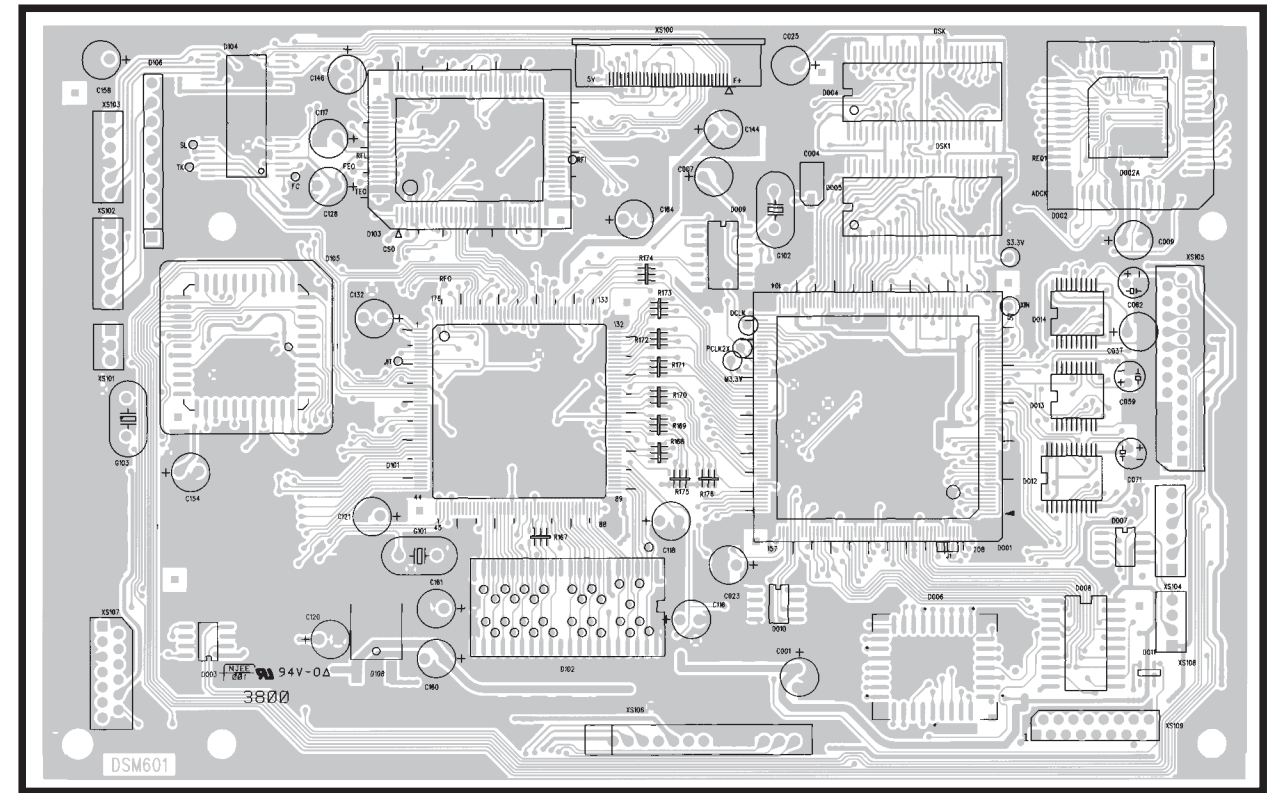
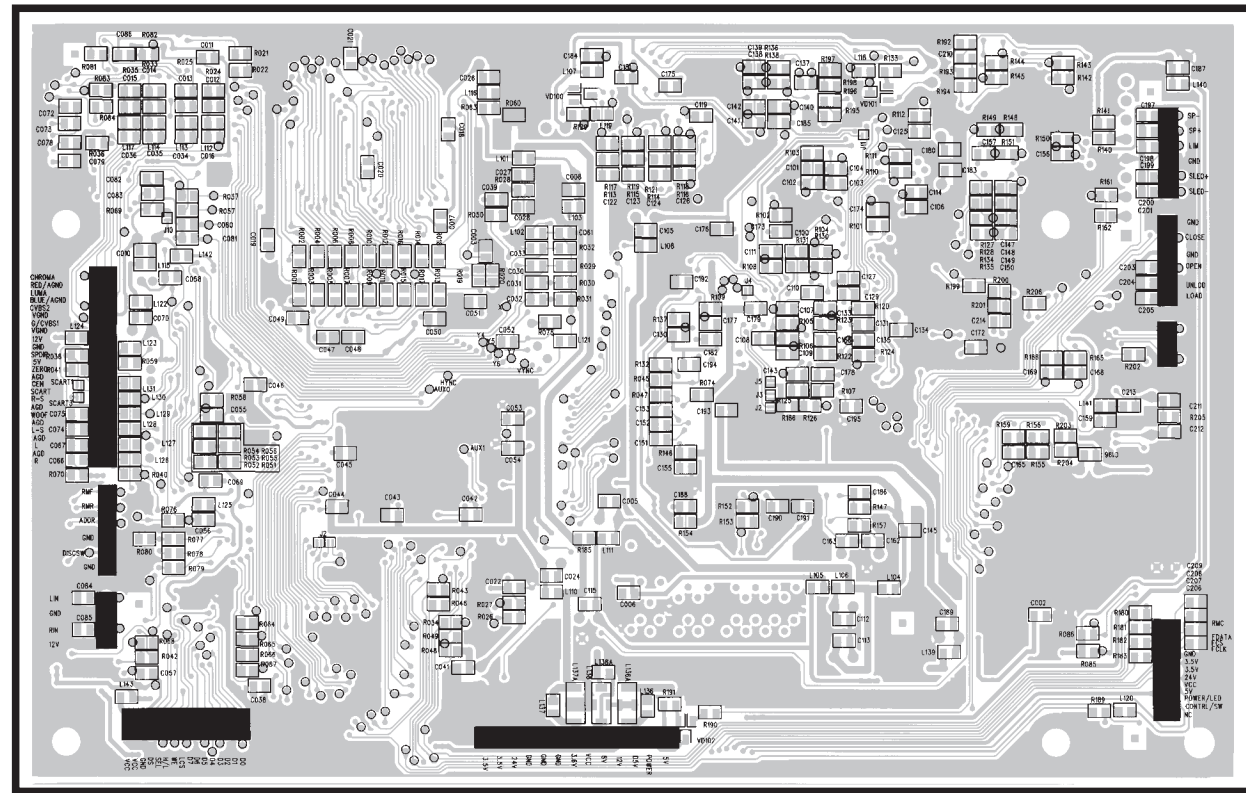


H3100 PHONE BOARD

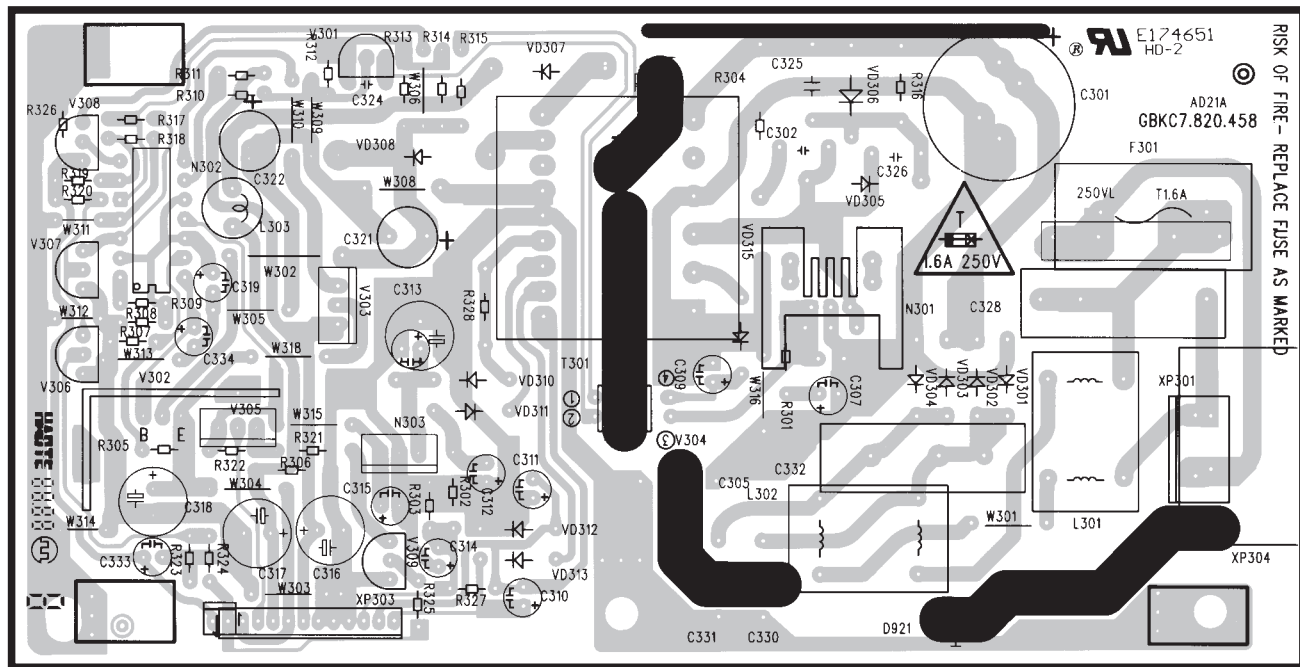




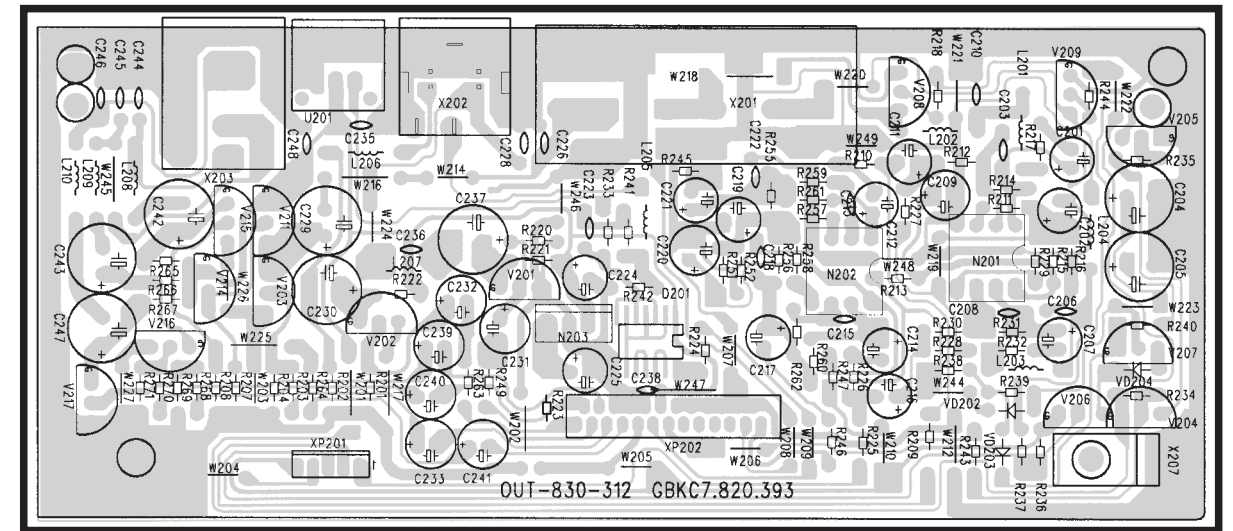
DVD3100K KEYBOARD



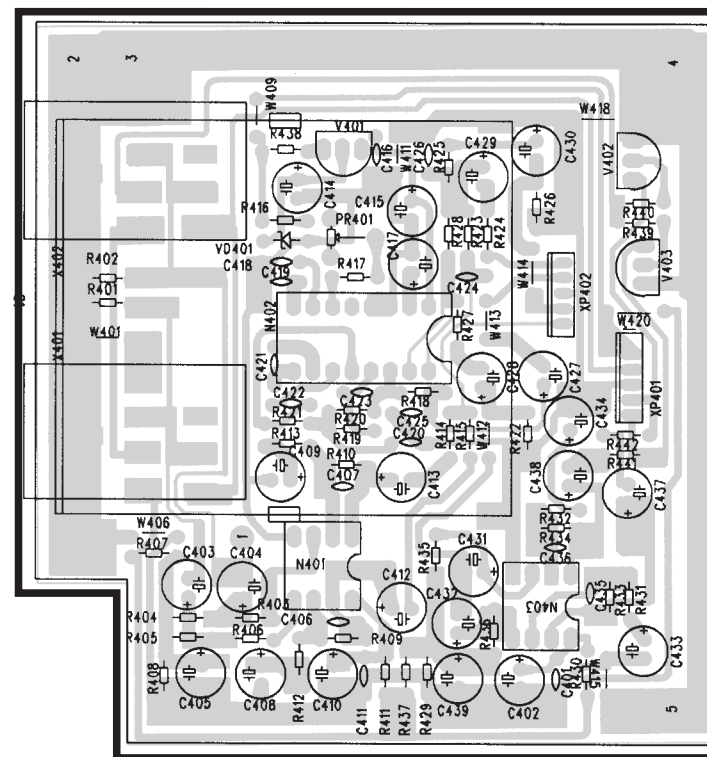
DSM6012BM MAIN UNIT



AD21POWER BOARD

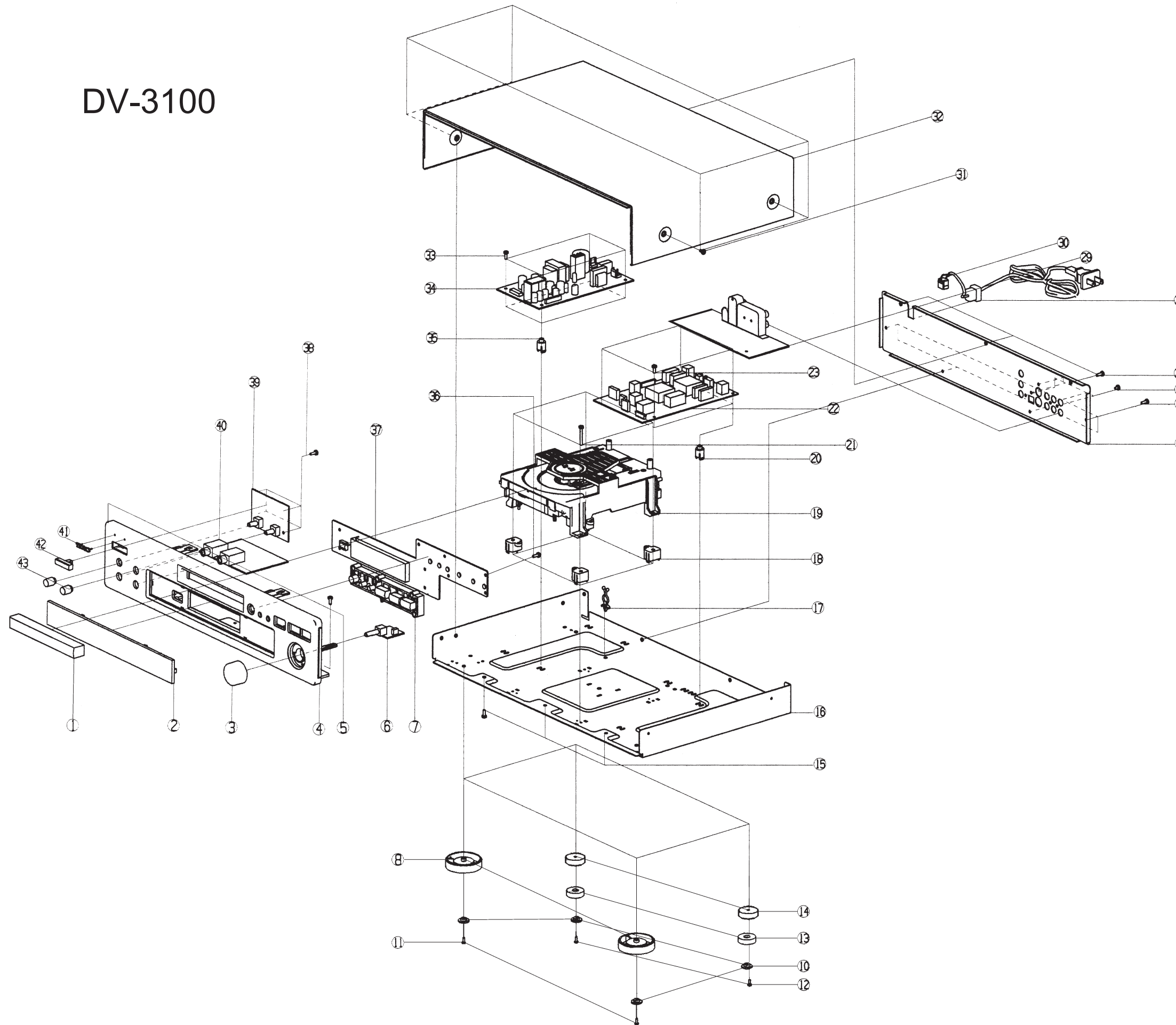


OUT-830-312 OUTPUT BOARD



DV-3100 PHONE BOARD

DV-3100



No.	PARTS No.	PARTS NAME
1	b6045j	DOOR
2	b6038	TRANSPARENT WINDOW
3	b6036j	KNOB
4	b6048j	FRONT PANEL
5	a2793	SCREW M3×6
6		SEARCH SWITCH
7	b6035j	FUNCTION
8	b6033	FOOT D
10	b1632	FOOT SPACER
11	a2766	SCREW ST3×12
12	a2765	SCREW ST3×10
13	b3020	FOOT SPACER A1
14	b3019	FOOT B1
15	a2793	SCREW M3×6
16	b6027	CHASSIS
17	b3183	WIRE CLIP
18	b6041	MECHANISM SPACER
19	S2277	MECHANISM ASSY
20	b1626	SPACER
21	a2776	SCREW ST3×18
22	0820	MAIN ASSY
23	a2779	SCREW ST3×14
24	b6042	REAR PANLE
25	a2794	SCREW M3×8
26	a2750	SCREW ST3×8
27	a2761	SCREW ST3×6
28	S3024	POWER HOLE
29	S2132	OUTPUT ASSY
30	S2629	POWER CORD
31	a2761	SCREW ST3×6
32	b6029j	TO[P] PANEL
33	a2777	SCREW ST3×20
34	S2177	POWER ASSY
35	b1626	SPACER
36	a2773	SCREW ST3×8FT
37	0813	KEY ASSY
38	a2794	SCREW M3×8
39	0823	POWER BUTTON ASSY
40	S7033	MIC ASSY
41		BADGE(TEAC)
42	b6034j	POWER BUTTON
43	b6037j	ECHO KNOB

EXPLODED VIEW LIST

REF. NO.	PARTS NO.	DESCRIPTION	REMARKS
1	9A08786100	DOOR	B6045J
2	9A08786200	TRANSPARENT WINDOW	B6038
3	9A08786300	KNOB	B6036J
4	9A08763800	FRONT PANEL	B6048J
5	9A08619000	SCREW, M3X6	A2793
6	-----	SEARCH SWITCH	
7	9A08786500	FUNCTION BUTTON	B6035J
8	9A08786600	FOOT D	B6033
10	9A08619500	FOOT SPACER	B1632
11	9A08786700	SCREW, ST3X12	A2766
12	9A08619400	SCREW, ST3X10	A2765
13	9A08786900	FOOT SPACER A1	B3020
14	9A08786800	FOOT B1	B3019
15	9A08619000	SCREW, M3X6	A2793
16	9A08787000	CHASSIS	B6027
17	9A08621500	WIRE CLIP	B3183
18	9A08787100	MECHANISM SPACER	B6041
19	9A08763400	MECHANISM UNIT, KHL-231A2M	S2277
20	9A08787700	SPACER	B1626
21	9A08621200	SCREW, ST3X18	A2776
22	9A08767500	MAIN UNIT	0820
23	9A08787300	SCREW, ST3X14	A2779
24	9A08794200	REAR PANEL	B6042
25	9A08619900	SCREW, M3X8	A2794
26	9A08620700	SCREW, ST3X8	A2750
27	9A08621000	SCREW, ST3X6	A2761
28	△ 9A08620800	POWER CORD HOLE	S3024
29	9A08795200	OUTPUT ASSY	S2132
30	△ 9A08763900	POWER CORD	S2629
31	9A08621000	SCREW, ST3X6	A2761
32	9A08787500	TOP PANEL	B6029J
33	9A08787600	SCREW, ST3X20	A2777
34	9A08767710	POWER UNIT	S2177
35	9A08787700	SPACER	B1626
36	9A08622000	SCREW, ST3X8FT	A2773
37	9A08763600	KEY CONTROL ASSY	0813
38	9A08619900	SCREW, M3X8	A2794
39	9A08795300	POWER BUTTON ASSY	0823
40	9A08795400	MIC ASSY	S7033
41	-----	BADGE	
42	9A08787800	POWER BUTTON	B6034J
43	9A08787900	ECHO KNOB	B6037J

INCLUDED ACCESSORIES

REF. NO.	PARTS NO.	DESCRIPTION	REMARKS
	9A08795500	OWNER'S MANUAL	S1027
	9A08795600	REMOTE ASSY, RC-806	S0672
	9A08764700	BATTERY	S2708
	9A08764100	RCA CORD AV	S2655

KEY CONTROL ASSY

REF. NO.	PARTS NO.	DESCRIPTION
	9A08763600	KEY CONTROL ASSY
D501	9A08655600	UPD16311
PH501	9A08655700	FABSE1252
RP001	9A08662500	KHX3-3W1D
S501-S506	9A08655400	EVQ20504M
U501	9A08655500	HS0038
V501	9A08654000	TR, C8050
VD501-503	9A08653800	DIODE, 1N4148
VED501	9A08655300	VFD25-0705
XP001	9A08662600	B-3B-PH

POWER UNIT

REF. NO.	PARTS NO.	DESCRIPTION
	9A08767710	POWER UNIT
	9A08766900	FUSE HOLDER
C301	△ 9A08650000	C, 450V 68U +-20%
C302	9A08648300	C, 1KV 470K
C305	△ 9A08648500	C, AC400V 222M
C328	△ 9A08648800	C, 280VAC 0.22M
C330, C331	△ 9A08648400	C, AC400V 471K
C332	△ 9A08648700	C, 280VAC 0.01K
F301	△ 9A08650800	FUSE, T1.6A/250V
L301	△ 9A08650500	INDUCTOR, POWER FILIER
L302	△ 9A08650600	INDUCTOR, VF2327L-253YOR
L303	9A08650300	INDUCTOR, COIL-0.02MH
N301	9A08645400	TR, TOP223Y
N302	9A08645500	IC, LM324
N303	9A08633400	TR, KA7812
R304	△ 9A08647400	R, 3W 2.2K +-5%
T301	△ 9A08650700	TRANSFORMER, BCK-R800A
V301	9A08650100	TR, KA4311Z
V302, V303	9A08645700	TR, 3DA3852
V304	△ 9A08650200	TR, PC123
V305	9A08766800	TR, 2SB772
V306, V307	9A08661800	TR, 9014C
V308	9A08654000	TR, C8050
V309	9A08654000	TR, C8050
VD301-304	△ 9A08785900	DIODE, 1N4007
VD305	△ 9A08647600	DIODE, RU-1P
VD306	9A08647700	DIODE, P6KE200
VD307	9A08648000	DIODE, RU2YX
VD308	9A08766500	DIODE, 31DQ06
VD310	9A08766600	DIODE, 11EFS2
VD311, 313	9A08786000	DIODE, 10ELS4
VD315	9A08786000	DIODE, 10ELS4
XP301	9A08650900	SOCKET, 3951P03V
XP303	9A08767000	DC POWER CORD
XP305	9A08767100	B-2B-PH

OUTPUT ASSY

REF. NO.	PARTS NO.	DESCRIPTION
	9A08795200	OUTPUT ASSY
D201	9A08767300	IC, 74HCU04A
L201-L205	9A08661700	INDUCTOR, 3.3UH
L206, L207	9A08661600	INDUCTOR, 1.8UH
N201, N202	9A08654200	IC, AN4558
N203	9A08654300	IC, CW7805
R223	△ 9A08652200	R, 1W 15 +-5%
U201	9A08767400	IC, TOTX178A
V201, V204	9A08653900	TR, 8550D
V202, V203	9A08768600	TR, 9015C
V205	9A08654000	TR, C8050
V206, V207	9A08653900	TR, 8550D
V208, V209	9A08654000	TR, C8050
V215-V217	9A08653900	TR, 8550D
VD202-204	9A08653800	DIODE, 1N4148
X201	9A08654500	JACK, CKX06-C
X202	9A08654600	SOCKET, CS-01
X203	9A08768700	JACK, CKX03-GBR
XP201	9A08654800	B-5B-PH
XP202	9A08654900	52806-2510

MIC ASSY

REF. NO.	PARTS NO.	DESCRIPTION
	9A08795400	MIC ASSY
N401, N403	9A08654200	IC, AN4558
N402	9A08664200	IC, PT2399
RP401	9A08663300	WH0615-22K
V401	9A08654000	TR, C8050
V402, V403	9A08661800	TR, 9014C
VD401	9A08664100	DIODE, ZENER 2CW-5.6V
X401, X402	9A08664300	JACK, CKX-6.35-7
XP402	9A08654800	B-5B-PH

POWER BUTTON ASSY

REF. NO.	PARTS NO.	DESCRIPTION
	9A08795300	POWER BUTTON ASSY
	9A08655400	EVQ20504M
H504	9A08765700	LED, 1X3.5 RED
RP501, 502	9A08662700	WH9011-1AL20F7